



COMING IN 2021

Join us for our new expansion at The Village of East Harbor-Harbor Inn

Presbyterian Villages of Michigan is excited to announce the expansion of our ranch style apartments and a brand new congregate apartment building on our beautiful 44-acre lifeplan campus.

Ranch Apartments:

- 36: two bedroom with two bathrooms
- All with attached one or two car garage
- Smart technology such as; front door lock, light switch thermostat, outlet in living room
- Concrete patio slab
- Open floor plan, fully equipped kitchen, pantry, 8' ceilings with coves, high grade finishes, oversized windows, stackable washer/dryer
- All lawn and snow maintenance covered

Congregate Apartment Building:

- 60: one and two bedroom apartments, with one or two bathroom (units vary)
- Smart technology such as: thermostat, outlet in the living room, front door lock, light switch
- Some units have balconies or patio*
- Carports available*
- Community room with full kitchen
- Open floor plan, fully equipped kitchen, pantry, 8' ceilings with coves, high- grade finishes, oversized windows, stackable washer/dryer.

Campus:

- Lifeplan campus which provides independent living, assisted living, memory care support, short term rehab, long term care. Future outpatient rehab center onsite
- Multiple food venues available on campus
- Transportation is available
- Fitness, spiritual, and enrichment programming
- Housekeeping and home health care available at additional fees

**additional fees may apply*

*All buildings are designed and built with **LEED** for Homes Certification*



The Village of
East Harbor
A SENIOR LIVING COMMUNITY

 A Mission of Presbyterian Villages of Michigan

HARBOR INN

Embrace the possibilities

The Village of East Harbor - Harbor Inn

33875 Kiely Drive
Chesterfield, Michigan 48047

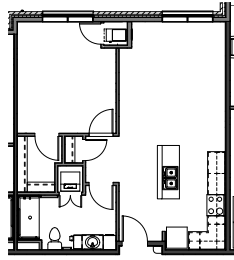
Call: 586.725.6030 Fax: 586.716.7170

www.pvm.org

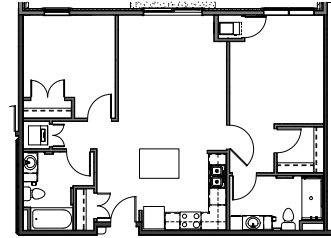
10/20



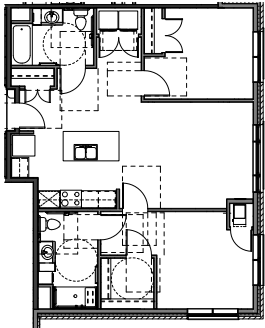
Congregate Apartments



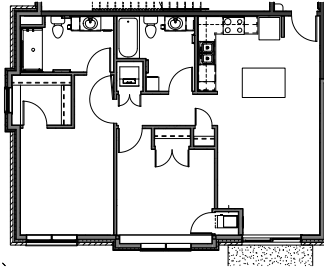
Unit A-1
700 sq. ft.
One bedroom/
one bath
\$1,825



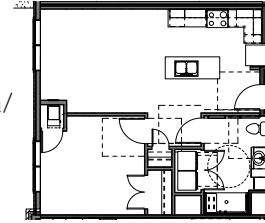
Unit B-1
950 sq. ft.
Two bedroom/
two bath
\$2,500



**Unit B
Physically
Handicap-1**
950 sq. ft.
Two bedroom/
two bath
\$2,500



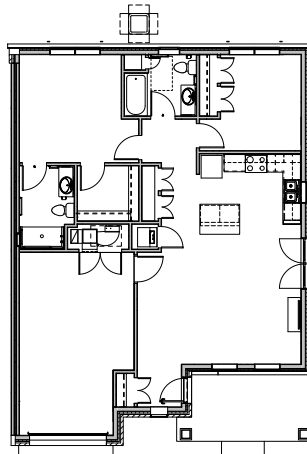
Unit B-2
1,022 sq. ft.
(Barrier-free)
Two bedroom/
two bath
\$2,500



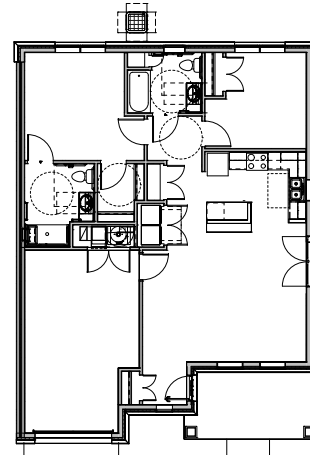
**Unit A
Physically
Handicap-1**
700 sq. ft.
(Barrier-free)
One bedroom/
one bath
\$1,825

Ranch Apartments

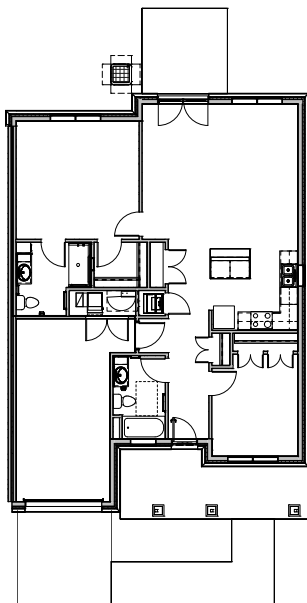
All units are two bedroom/
two bathroom



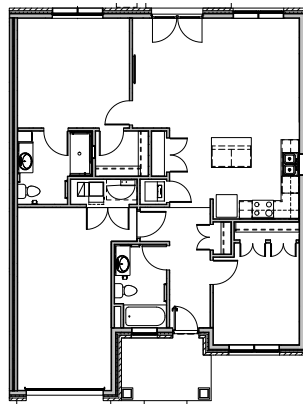
Unit E
1,100 sq. ft.
\$2,750



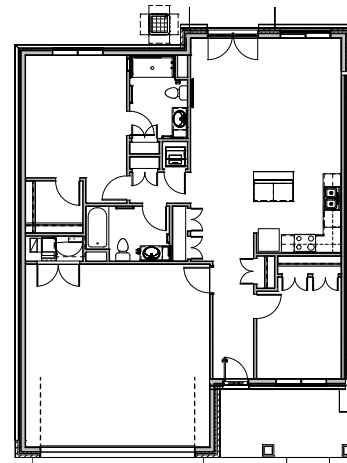
**Unit E
Physically
Handicap**
1,100 sq. ft.
\$2,750



Unit G
1,200 sq. ft.
\$3,000



Unit F
1,100 sq. ft.
\$2,750



Unit K
1,200 sq. ft.
\$3,050